

COURTYARD[®]
BY MARRIOTT

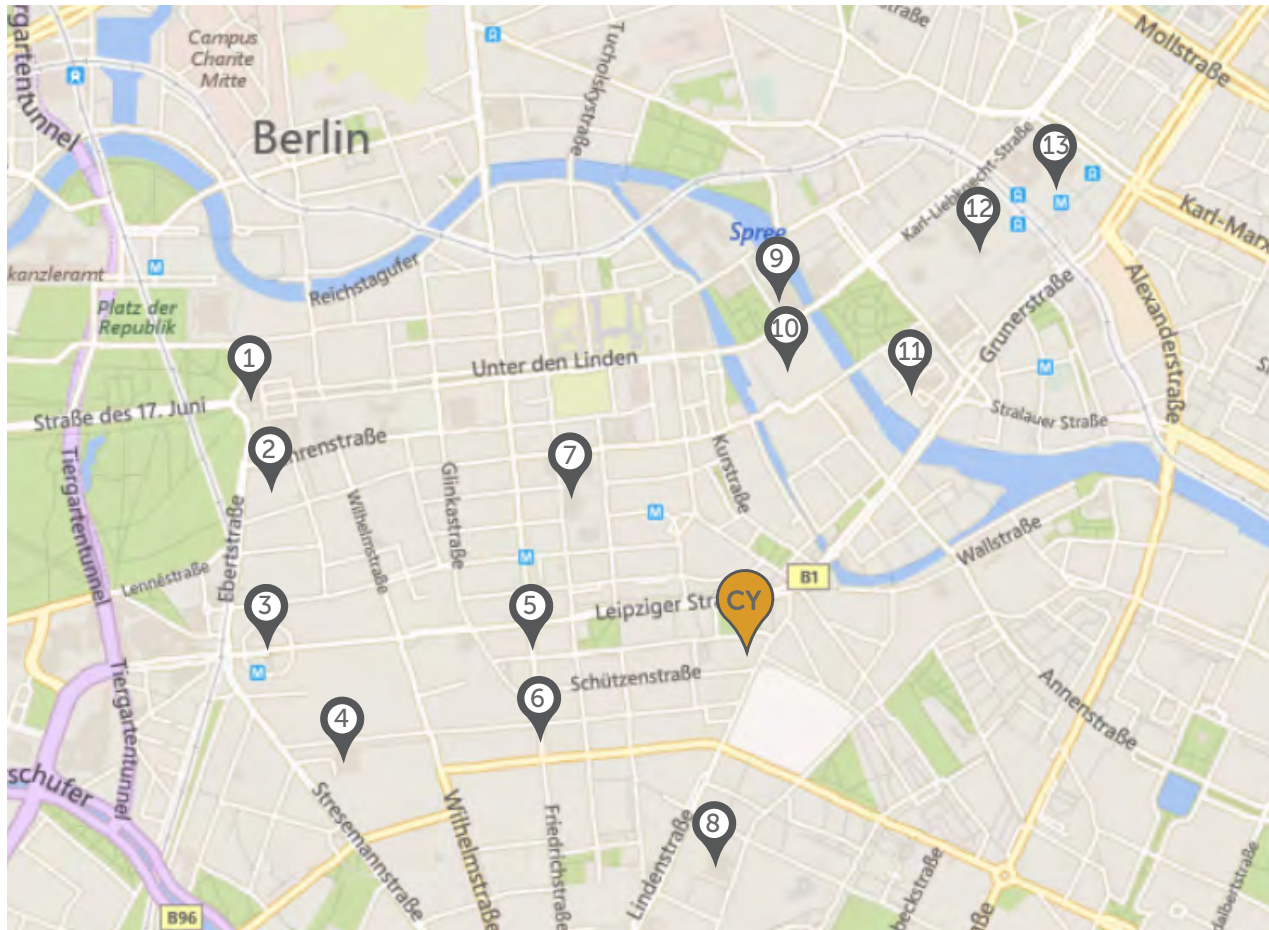
Berlin City Center

Courtyard by Marriott Berlin City Center, Axel-Springer-Strasse 55, 10117 Berlin

WELCOME TO BERLIN

- Central location in Berlin's former newspaper district in Berlin's city center
- 267 renovated guest rooms
- 11 versatile function rooms
- Casual dining restaurant 'Kitchen & Bar at Courtyard'
- On site coffeeshop '#Hashtag'
- 24h Lobbyshop 'The Market'
- Fitness Center (currently under renovation)
- Business Center
- Underground car park with 70 parking spots

UNIQUE LOCATION IN BERLIN'S FORMER NEWSPAPER DISTRICT



- Centrally located between Alexanderplatz and Potsdamer Platz
- Tranquil and developing surrounding business area

WALKING DISTANCE TO BERLIN'S FAMOUS SIGHTS

1. Brandenburg Gate	2.4 km
2. Holocaust Memorial	2.0 km
3. Potsdamer Platz	2.0 km
4. Gropius Bau	1.5 km
5. Friedrichstraße	1.0 km
6. Checkpoint Charlie	1.0 km
7. Gendarmenmarkt	1.0 km
8. Berlinische Galerie	1.1 km
9. Berlin Cathedral	2.0 km
10. Berlin Palace	1.2 km
11. Nikolaiviertel	1.3 km
12. TV Tower	2.5 km
13. Alexanderplatz	2.5 km

EXCELLENT CONNECTION TO PUBLIC TRANSPORT

Spittelmarkt U2	0.8 km
Central station	5 km
Airport (BER)	27 km
Fair Ground	10 km



ROOMS DESIGNED WITH YOU IN MIND

- Newly renovated guest rooms with contemporary European design (since September 2022)
- All rooms feature the following:

Advanced technologies

55-inch LG TVs with Chromecast, USB-A & USB-C ports at plug sockets, Mobile Key

Sustainable concept

Vinyl flooring from partly recycled material, bathroom amenities in household size, new air-condition units, water softening system for hot and cold water

Focus on well-being

Soundproof windows, comfortable Marriott beds, free Wi-Fi, rotatable work desk with hybrid seating

4 ROOM CATEGORIES

236	Deluxe Rooms (King, Twin, Queen Accessible)	26 sqm
21	Superior Rooms (King, Twin)	32 sqm
6	Studios	44 sqm
4	One-Bedroom Apartments	53 sqm

- Sofa bed in Superior rooms, Studios and One-Bedroom Apartments
- Barrier-free certified rooms and rooms with connecting doors available
- All rooms are petfriendly and non-smoking

DELUXE KING ROOM (26 SQM)



DELUXE TWIN ROOM (26 SQM)



DELUXE QUEEN ROOM (26 SQM) - ACCESSIBLE



SUPERIOR KING ROOM (32 SQM)



SUPERIOR TWIN ROOM (32 SQM)



STUDIO (45 SQM)



ONE-BEDROOM APARTMENT (53 SQM)





INSPIRING MEETING & EVENTS

- 11 light-flooded and versatile function rooms
- Capacity for up to 230 people
- 2 spacious foyers for exhibitions and receptions
- State-of-the-art conference technology
- Meeting packages for half and full day

[DISCOVER OUR VENUE SPACES HERE](#)

[360 DEGREE TOUR](#)

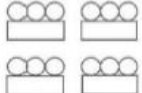



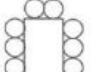


EXCLUSIVE EVENT SPACE 'BERLIN'

- Largest meeting room with 267 sqm
- Space for up to 230 people in theater set-up
- Connected to own foyer and atrium
- Total of 630 sqm event space

HYBRID MEETING SYSTEM

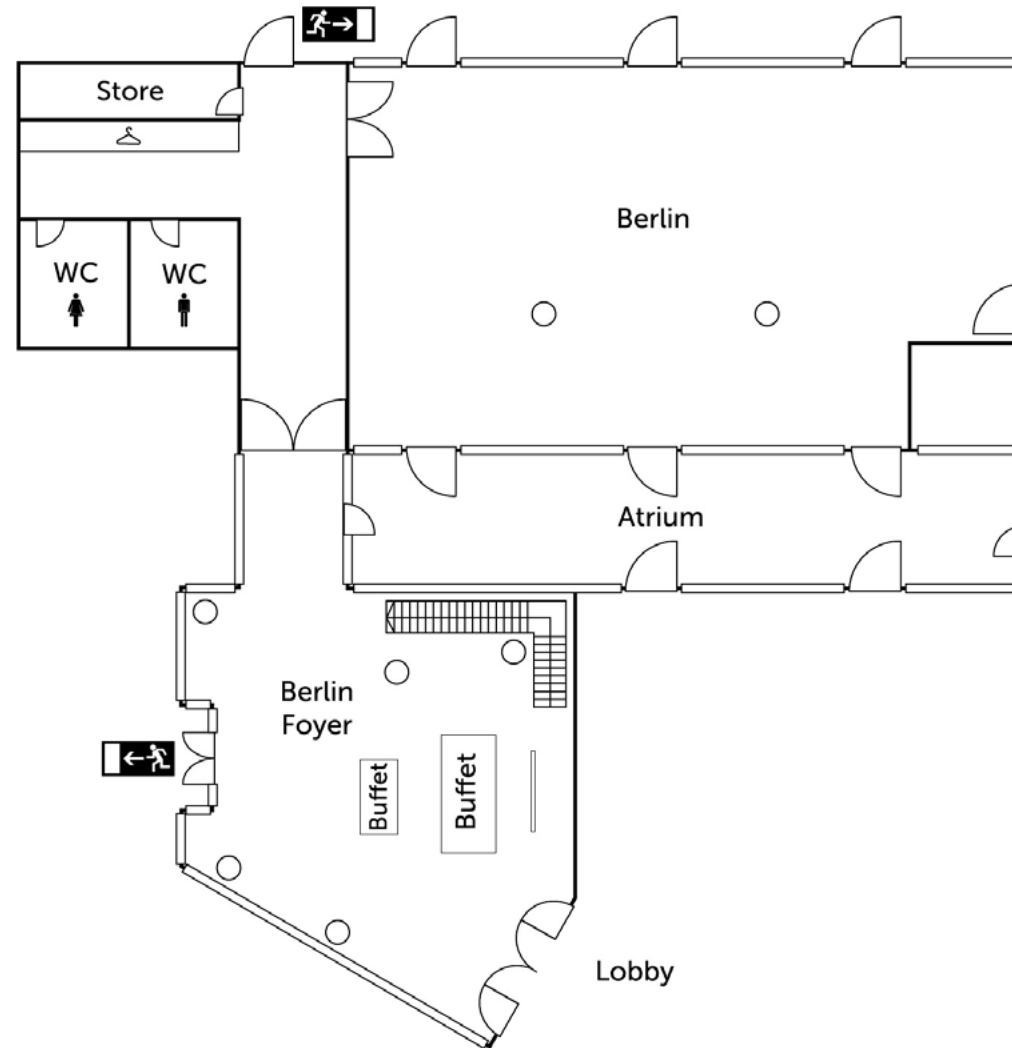
- One wide angle camera (Ultra HD - 4K resolution)
- Two table microphones & two speakers
- Plug & Play - no software download necessary
- Works with any webinar software
- Suitable for groups up to 50 in-house attendees

BANQUET CAPACITIES

Room	Size in m ²	Measures L x W x H	 Classroom	 Theatre	 Banquet	 Boardroom	 U-Shape	 Crescent Rounds	 Circled
München 1	45	6x6x3	15	22	16	14	---	12	12
München 2	52	7x6x3	25	34	24	16	18	18	20
München 3	52	7x6x3	25	34	24	16	18	18	20
München 4	98	12x8x3	44	70	48	26	36	30	36
München 1-2	97	13x6x3	40	62	48	26	30	30	30
München 1-3	149	20x6x3	65	95	64	50	54	54	56
München 1-4	247	32x6x3	110	160	128	72	82	90	80
München 2-3	104	14x6x3	52	68	64	32	36	36	36
München 2-4	202	26x6x3	100	130	112	64	72	78	70
München 3-4	150	19x6x3	68	100	80	44	48	54	50
Hamburg 1	31	4x7x3	---	16	8	12	---	---	12
Hamburg 2	52	7x7x3	25	32	24	16	18	18	20
Hamburg 3	52	7x7x3	28	36	24	16	18	18	17
Hamburg 1-2	83	11x7x3	43	50	40	26	30	30	30
Hamburg 1-3	135	18x7x3	70	95	72	50	54	54	54
Hamburg 2-3	104	14x7x3	52	72	64	32	36	36	40
Bremen	50	8x6x3	21	32	24	16	18	18	20
Hannover	44	8x5x3	21	30	24	16	18	18	20
Köln	50	2x6x3	---	---	---	12	---	---	---
Berlin	267	22x12x3.7	140	230	120	---	45	90	60

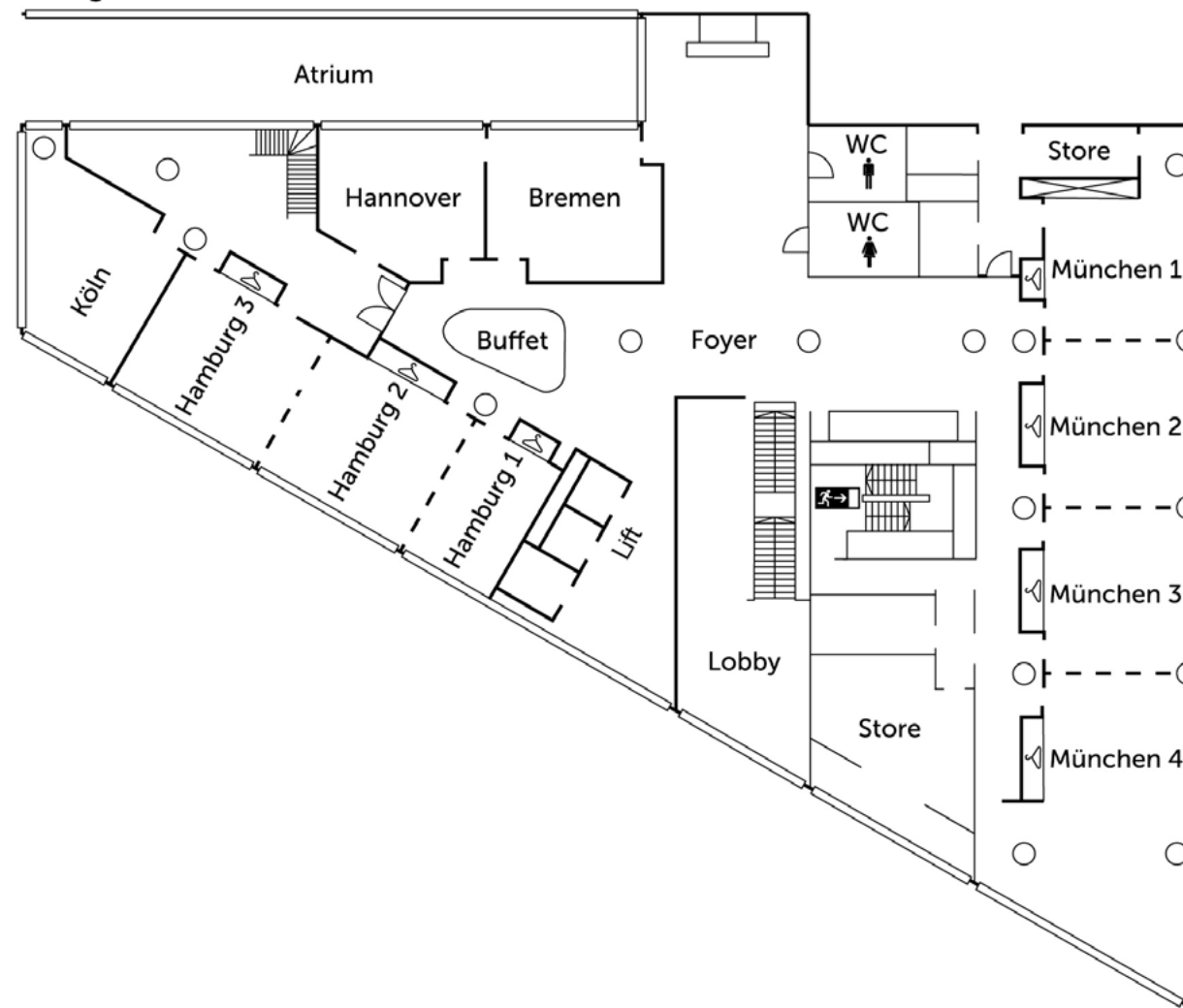


GROUND FLOOR





FIRST FLOOR



1350 SQM OF FUNCTION SPACE





RESTAURANT KITCHEN & BAR

MODERN DINING RESTAURANT WITH A CASUAL AMBIENCE

- Open for breakfast and dinner
- A capacity of 170 seats
- Rich breakfast buffet with a wide selection of cold and hot food options
- À la carte dinner with international dishes and regional specialties
- Bar with a great wine, beer and longdrink selection
- Outdoor terrace in summer with 30 seats and barbecue



THE MARKET

- Offers a selection of cold drinks, small snacks, souvenirs and selected articles for daily needs
- Open around the clock



#HASHTAG COFFEESHOP

URBAN ATMOSPHERE AND DELICIOUS LUNCH BOWLS

- Open on weekdays
- Serves hot coffee specialties and cool drinks
- Savoury and sweet snacks for breakfast and lunch
- Signature lunch bowls - create your own bowl according to your taste
- Free Wi-Fi

EXTRAORDINARY EVENT LOCATION

- Bookable as an exclusive event location
- Suitable for group of 10 - 50 people
- Beverage Package available
- #Hashtag Snacks available

Krausenstrasse 41, 10117 Berlin
hashtagberlin@hashtag-coffeeshop.com

[VISIT THE WEBSITE](#)

Discover our social channels



YOUR CONTACTS

YANNICK VAN HUISSTEDEN

Head of Sales & Distribution

yannick.vanhuissteden@courtyard.com

Phone: +49 30 800 928 6030

Mobile: +49 176 1800 9282



AARON BROWN

Sales Coordinator

aaron.brown@courtyard.com

Phone: +49 30 800 928 6026



JOANA SCHÄTZCHEN

Sales Coordinator

joana.schaetzchen@courtyard.com

Phone: +49 30 800 928 6027



GENERAL INQUIRIES

sales.courtyard.berlin@courtyard.com

WEBSITE

www.courtyardberlincitycenter.com

Discover Courtyard Berlin's social channels

