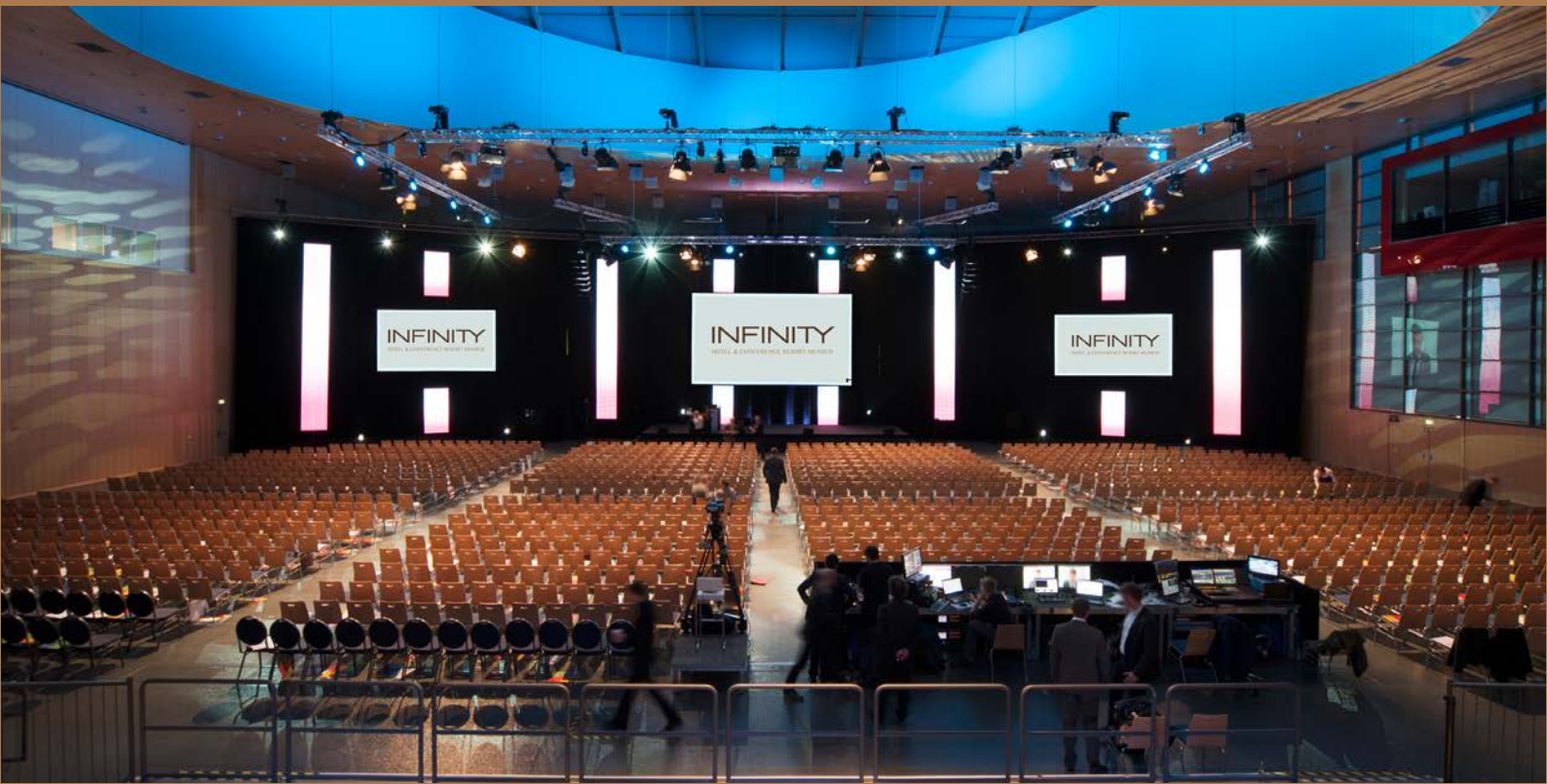


INFINITY

HOTEL & CONFERENCE RESORT MUNICH



BALLHAUSFORUM

TECHNICAL MANUAL

THE BALLHAUSFORUM



The 1,342 m² (approx. 14,445 ft²) BallhausForum arena is topped with a glass cupola, lies on a level ground, is completely pillar-free, and can be accessed directly via the loading dock. Through the main entrance on the south side you enter the BallhausForum via the conservatory. This leads to the foyer areas "Platz I" (E 1) and "Platz II" (E 2).

ROOMS & COATROOM

The two meeting rooms, Walchensee and Wörthsee, are located on level 2 and separated from the Platz II by a mobile partition. Here you will also find the gallery and main hall. In the backstage area, on level 0, you will find the dressing rooms, a guest coatroom, and the restrooms.

MAIN HALL

Base area of	1,342 m ² (approx. 14,445 ft ²)
Hall	45.5 m x 29.5 m (150 ft x 97 ft)
Cupola diameter	34 m x 19 m (111 ft x 62 ft)
Hall height	12.4 m (approx. 40 ft) to hall ceiling 18.5 m (approx. 60 ft) below the glass cupola

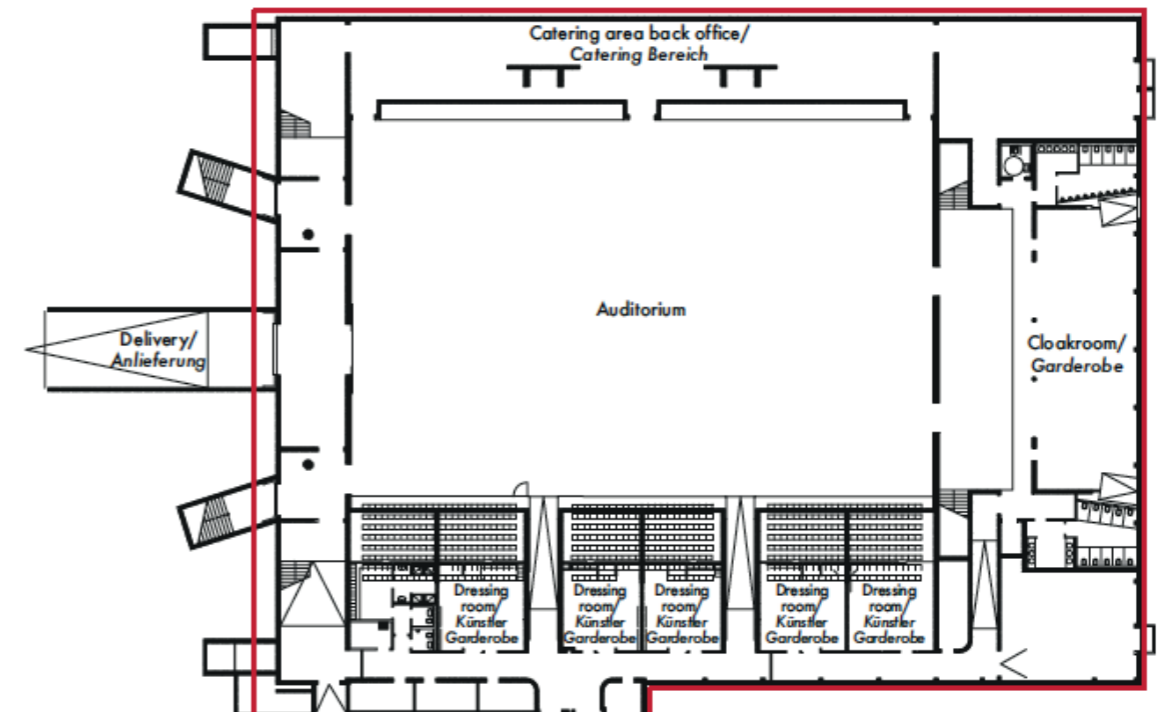
CAPACITIES

The number of standing places depends on the stage size; the maximum number of visitors according to the fire department is 2,500 persons.

PARKING

There are approximately 1,000 free parking spaces directly at the BallhausForum.

E0 | AUDITORIUM



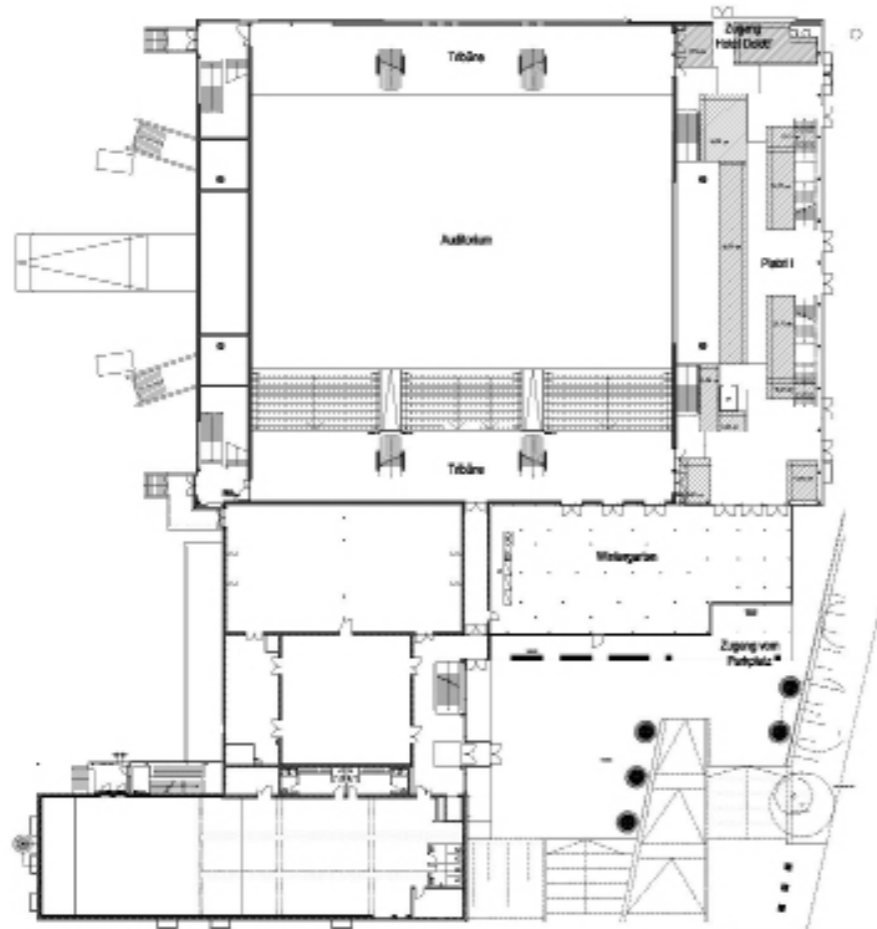
E 0 - BASEMENT - AUDITORIUM

The auditorium is directly accessible by: The driveway, which has dimensions of 3.61 m x 3.11 m (approx. 12.5 ft x 10 ft), the loading dock to the auditorium is 4 m (approx. 13 ft). Here you can load and unload at all hours of the day or night. The floor consists of a coated screed industrial floor with a maximum surface load of 10 kN/m² and a point load of 5 kN.

You may use battery-powered and diesel-powered industrial trucks. For diesel-powered vehicles, parts of the BMA must be switched off, because the presence of a fire alarm is required. There are four special channels for cable laying in the hall floor. Fixed grandstand seats are located in the south with an upper tier (460 people) and a lower tier (552 people). Furthermore, the auditorium has wheeled grandstand seating in the north, with more availability in the lower tier (512 persons), and other fixed grandstand seats in the upper tier (460 persons). In total, there are 1,984 places available on the grandstands.

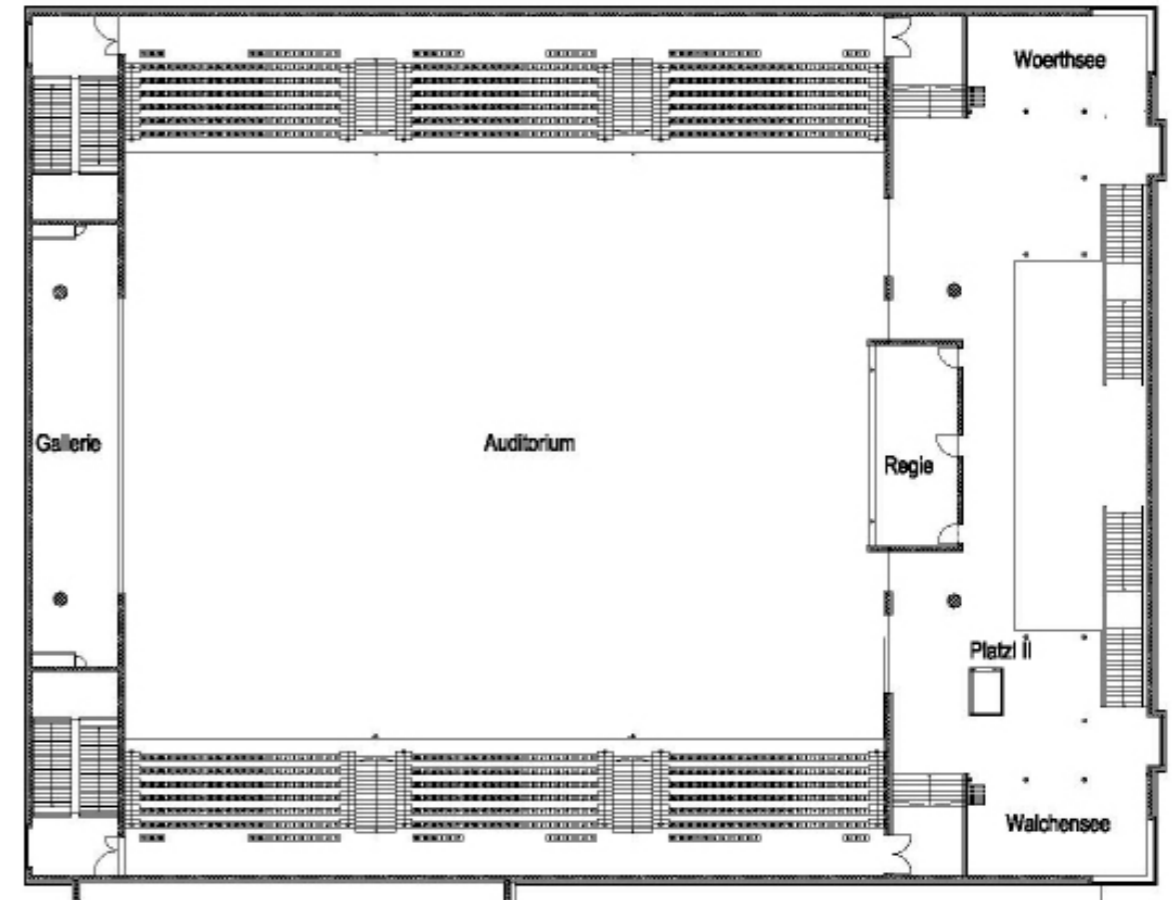
In the basement, next to the auditorium entrance, you will find the guest coatroom, the restrooms, and five dressing rooms (each approx. 13 m², or 140 ft²). These have a toilet, a large shower room, and a crew room with a size of approx. 69 m² (743 ft²).

E1 | WINTERGARTEN / PLATZL I (CONSERVATORY)

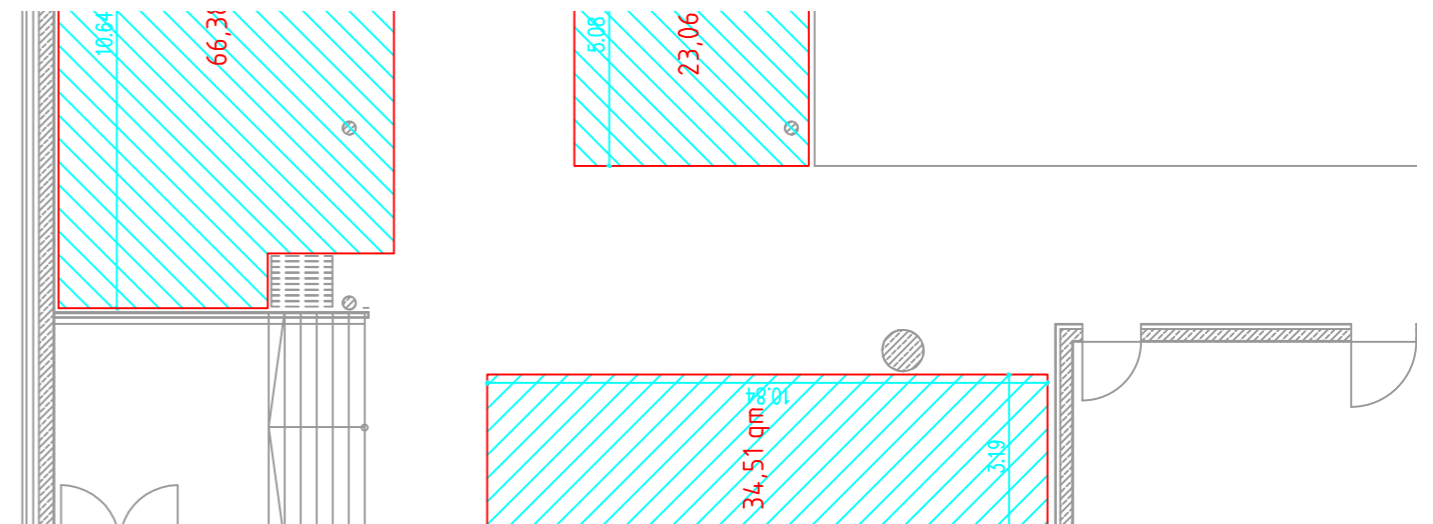
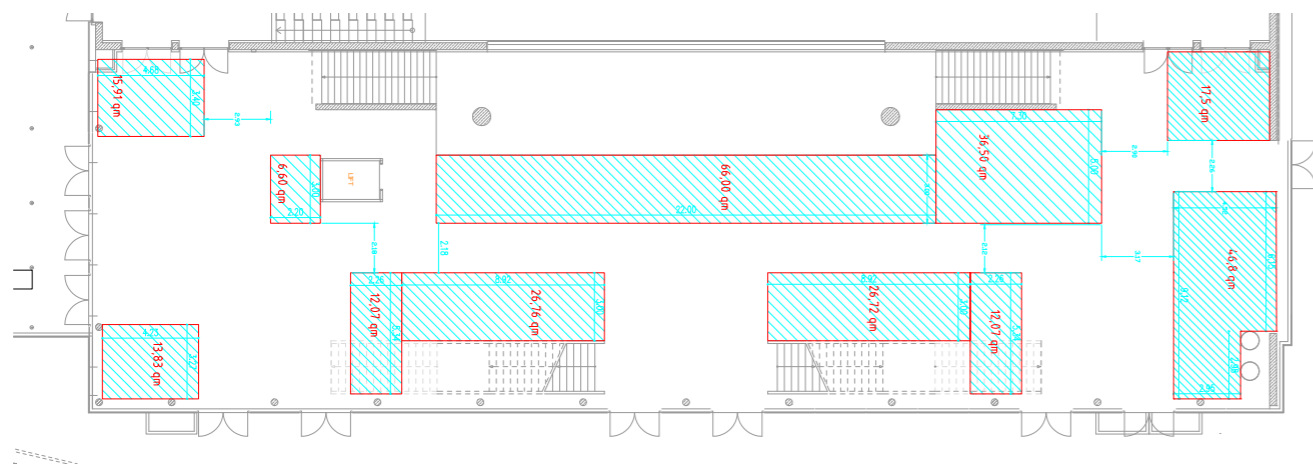


Platzl I example exhibition space

E2 | WINTERGARTEN / PLATZL II (CONSERVATORY)



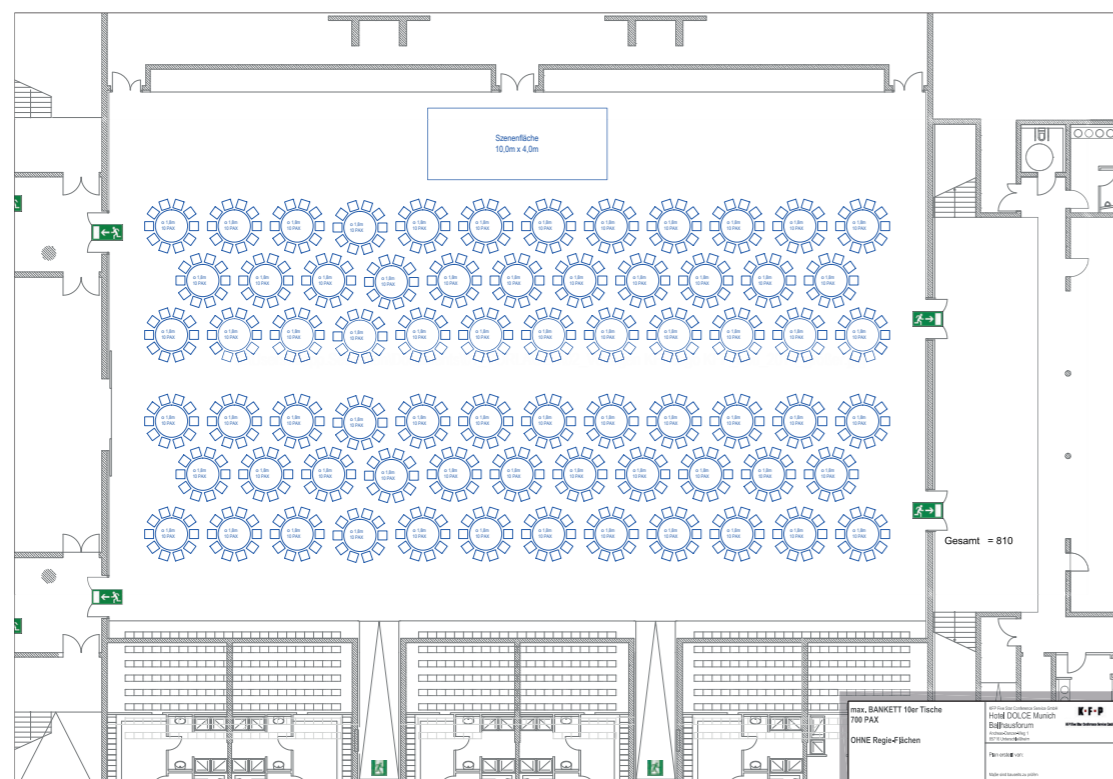
Platzl II example exhibition space



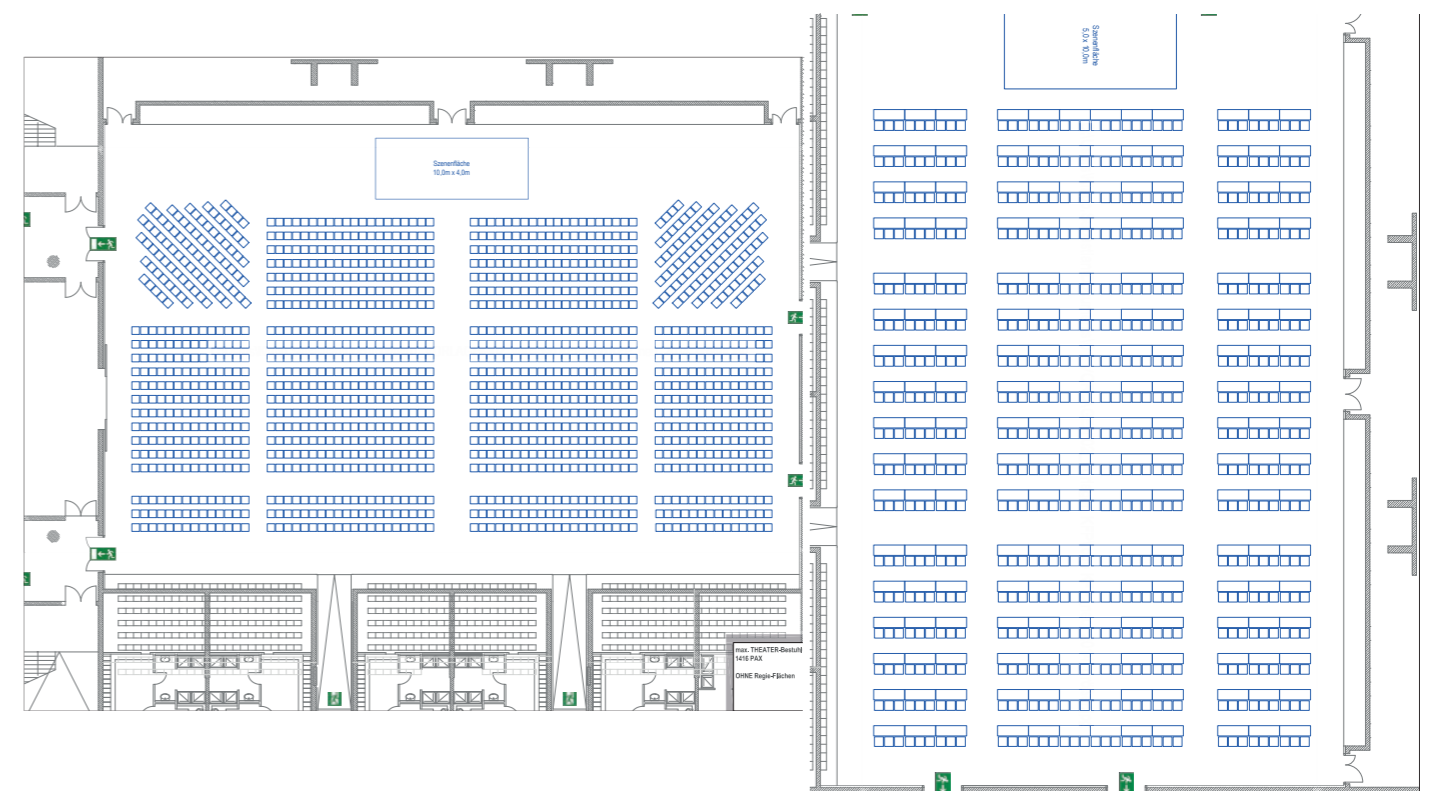
SEATING VARIATIONS



DINNING - 690 seats
CABARET - 520 seats



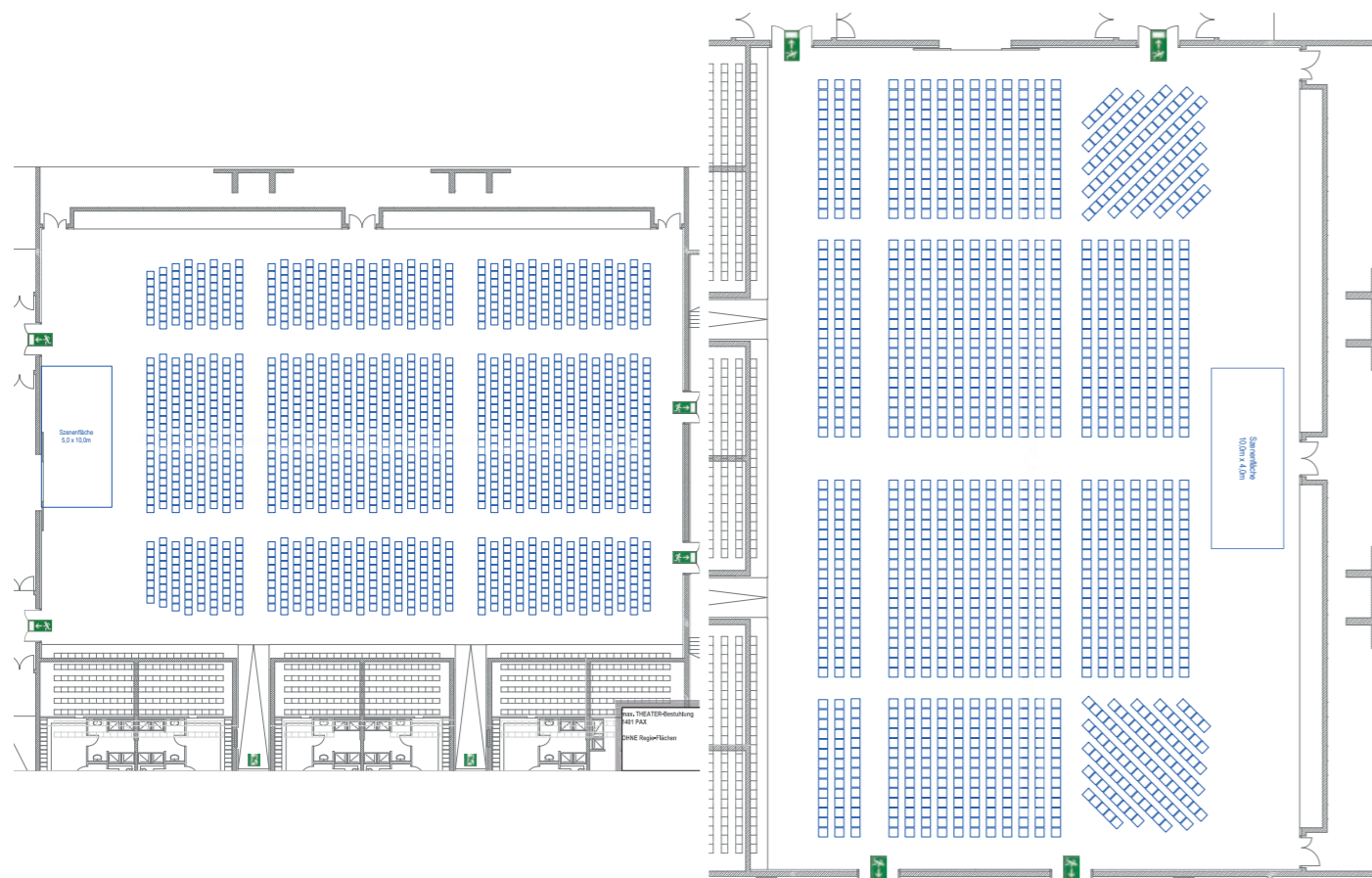
CLASSROOM - 700 seats



SEATING VARIATIONS



THEATER - 1,400 seats



MISCELLANEOUS

STROMVERSORGUNG

Auditorium

Main supply of loading dock: max. 160 A in 2x CEE125A (max 80 kW each).

Also available in the room:

- 1x CEE16A (max. 10 kW) in the south gallery
- 1x CEE32A (max. 20 kW) in the north gallery

Platz I

- 2x CEE32A (each max. 20 kW) from basement
- 2x CEE16A (max. 10 kW each) under the stairs from E1 to E2
- Outlets with a max. of 3 kW from floor boxes

Platz II

Outlets with a max. of 3 kW from floor boxes

Wintergarten

Outlets with a max. of 3 kW from floor boxes

LIGHTING & AUDIO TECHNOLOGY

The hall is filled with natural light through the glass cupola. The ceiling spotlights are positioned around the glass cupola and have over 1000 lux. The glass cupola can be darkened with blinds (no total blackout). There is no fixed sound system built into the hall.

INTERNET

- Dedicated bandwidth up to 1,000 Mbps symmetrical service
- Redundant connection
- Low latency
- Videoconferencing & Streaming
- VoIP SIP Account
- Fixed, public IP addresses
- Routed nets
- IPV6
- Connections between different conference rooms
- VLAN's , QoS, VPN
- WLAN with 2.4 and 5 GHz (also with customer-specific SSIDs)

FIREWORKS & OTHER FLAMMABLES

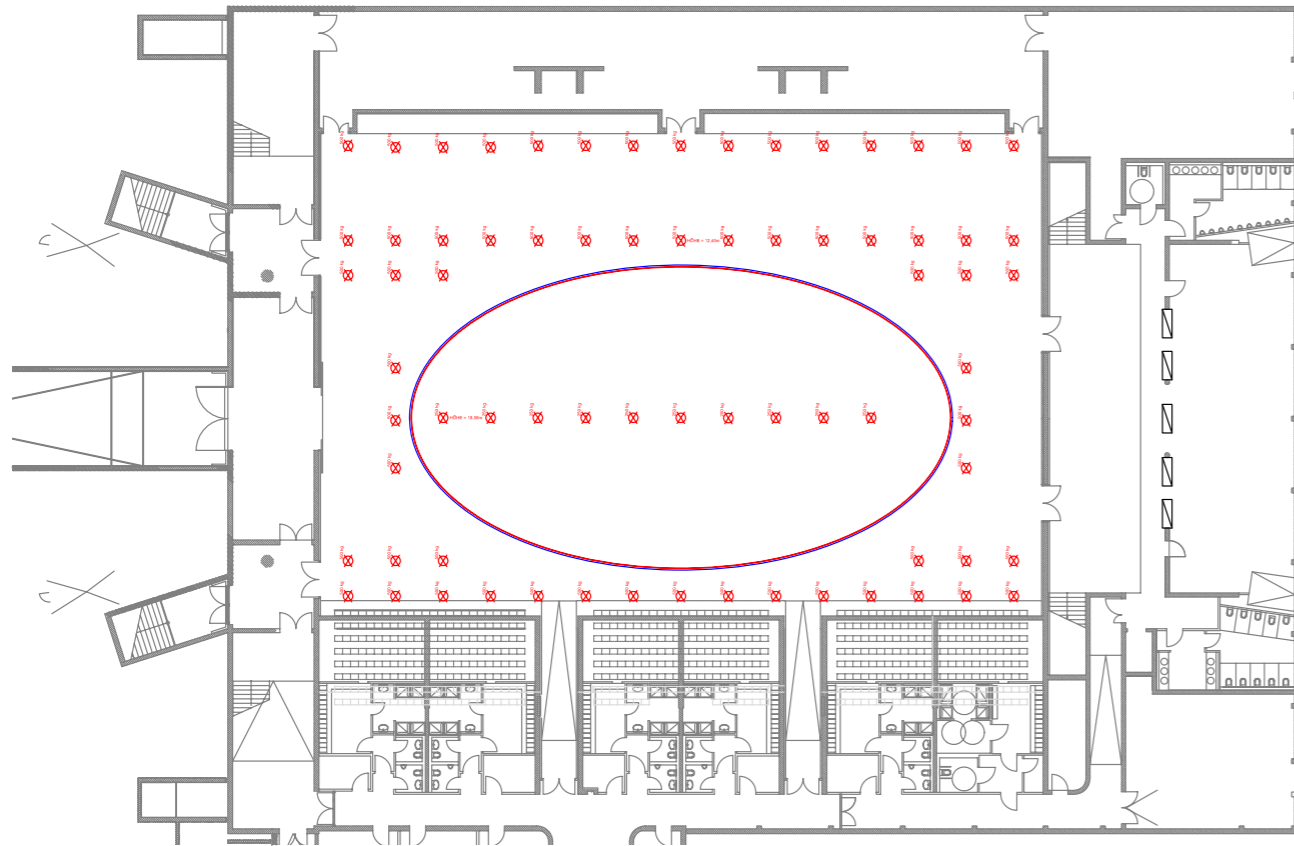
Pyrotechnics and the operation of laser systems are only permitted with prior registration and approval. Stipulations may be imposed by the city and/or operator. Vehicles may be presented as soon as it has been ensured that the tank is empty (max 5 l) and the batteries are disconnected. Every vehicle must have at least one fire extinguisher.

For decorations with candles, self-extinguishing catering candles must be used. The candles must be securely fixed and must not be displayed in stands.

HANGING POINTS AND RIGGING

Roof construction: Glass

73 suspension points that can support 500 kg (1,100 lbs.) lie in rows with a distance of about 3 m (10 ft). Under the cupola, the suspension points can be used exclusively in the cupola center, and with a max. load of 250 kg/point (550 lbs.).



ANY QUESTIONS?

CONTACT US:

HOTEL INFINITY MUNICH

Andreas-Danzer-Weg 1-3, 85716 Unterschleißheim

E-Mail: info.ballhausforum@infinity-munich.de

Tel.: +49 (0)89 999 56 137

www.infinity-munich.de

IMPORTANT ADDRESSES AND CONTACTS

Our partner SSM is responsible for the event technology in our company:

SSM Veranstaltungstechnik GmbH

Ralf Schoger

Tel: +49 (0)31 20 800

Mail: schoger@ssm.de

Bau- und Ordnungsamt Stadt Unterschleißheim

Rathausplatz 1, 85716 Unterschleißheim

E-Mail: stadt@ush.bayern.de, Tel: +49 (0)89 310 3705

Fire Department

Carl-von-Linde-Straße 34b, 85716 Unterschleißheim

Tel: +49 (0)89 310 094 00



INFINITY

HOTEL & CONFERENCE RESORT MUNICH

www.infinity-munich.de